

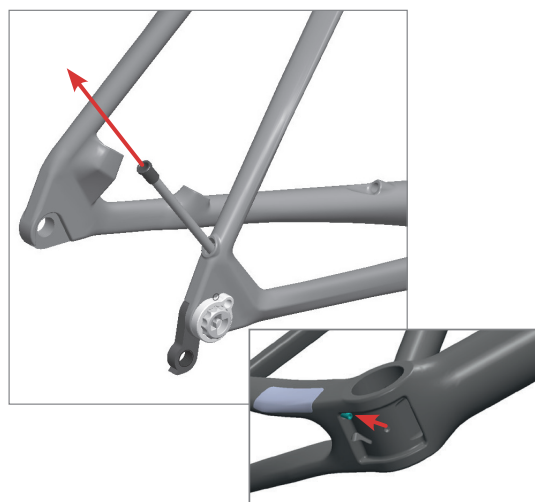
1 headtube plug

- › **Make sure the correct Di2 headtube plug is installed**
- Caliperbreak version:
DCW itemnumber 325915002 marked with **CD** for caliper **Di2**
- Discbreak version:
DCW itemnumber 325915004 marked with **DD** for Disc **Di2**



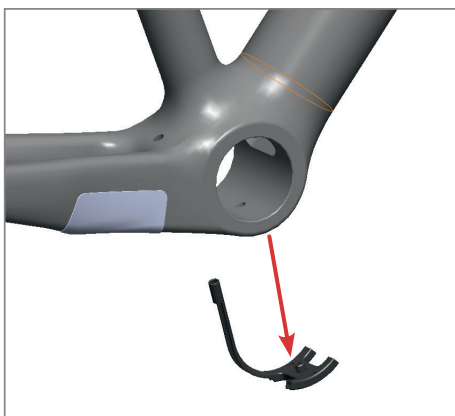
3 CS cablerouting

- › **Remove the CS cablestopper and liner**
- those parts are not needed if running the frame with Di2 FD/RD
- If the cablestoppers fit it very tight you can also pull it thru by using a shift or brakecable inserted in the CS liner from the BB side.



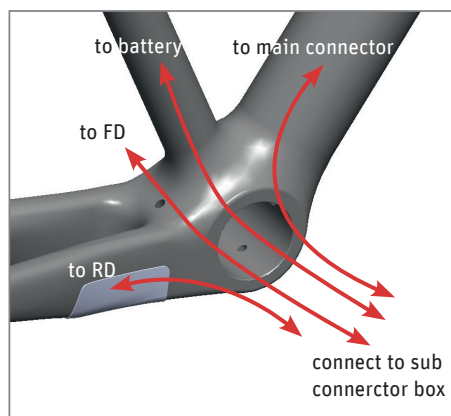
2 BB cablerouting

- › **Remove the BB cabletunnel**
- this part is not needed if running the frame with Di2 FD/RD



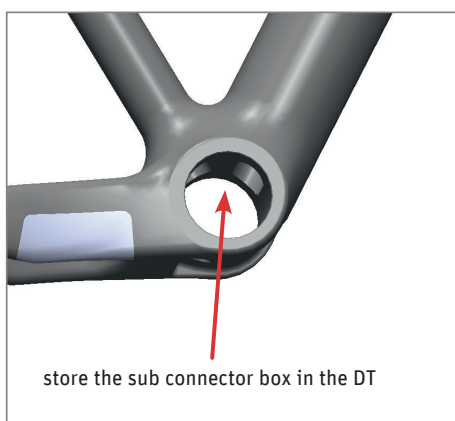
4 Di2 installation

- › **now install Di2 according to Shimano manual**
- Pull all cables out thru the BB
- Connect RD cable, FD cable, battery cable and the cable to the main connector to the sub connector box



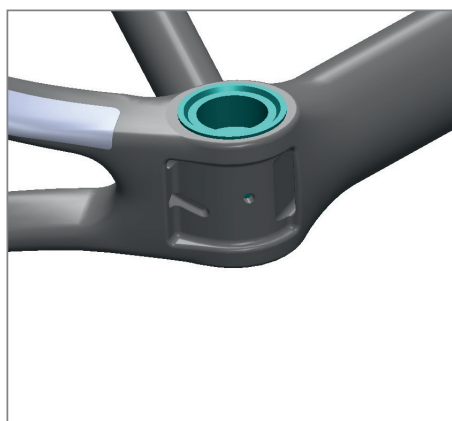
5 Di2 installation

- › **Place sub connector box**
- Insert the sub connector box into the DT thru the BB



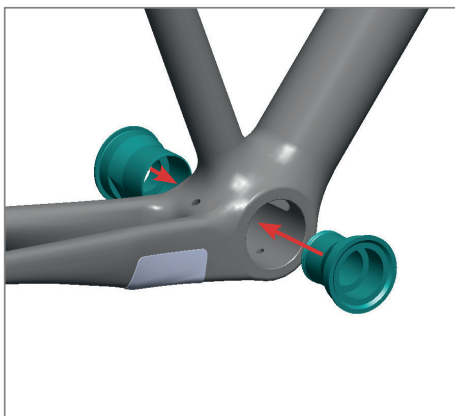
7 Finished!

- › **Cable tunnel under BB remains empty**
- Make sure no cables are hanging out under the BB!



6 BB (adapter) installation

- › **Install BB**
- Insert the BB, or BSA adapter into the frame.
- Make sure all cables are running free without getting squeezed before finally pressing the bearings/adapter in.



Focus Bikes

Derby Cycle Werke GmbH ● Siemensstraße 1-3 ● D-49661 Cloppenburg
Tel +49.4471.966-0 ● Fax +49.4471.966-44 845 ● Mail info@derby-cycle.com

www.focus-bikes.com